

A. Package contents

- Controller x 1, Hanger x 1, Accessory kit x1
(Plastic screw x3, Fastening screw x3, 1N4004 x1, Starlike T8 screw tool x1)
CD x1, Warranty card x1, Installation guide x1

B. Specification

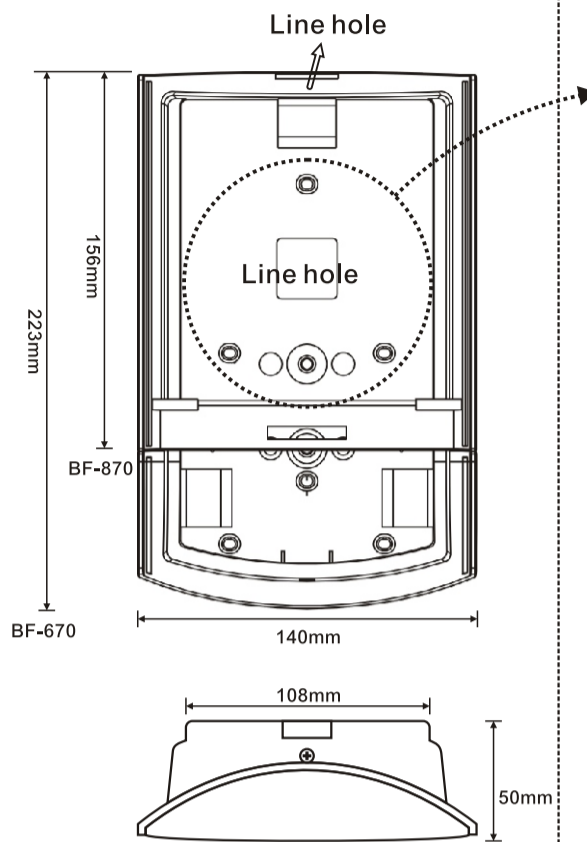
- Physical Dimension
BF-670: 140 X 223 X 65 (mm)
BF-870: 140 X 156 X 50 (mm)
- RECOMMENDED
Cable with shielded, Linear DC power supply,
Network cable.

■ SPECIFICATIONS

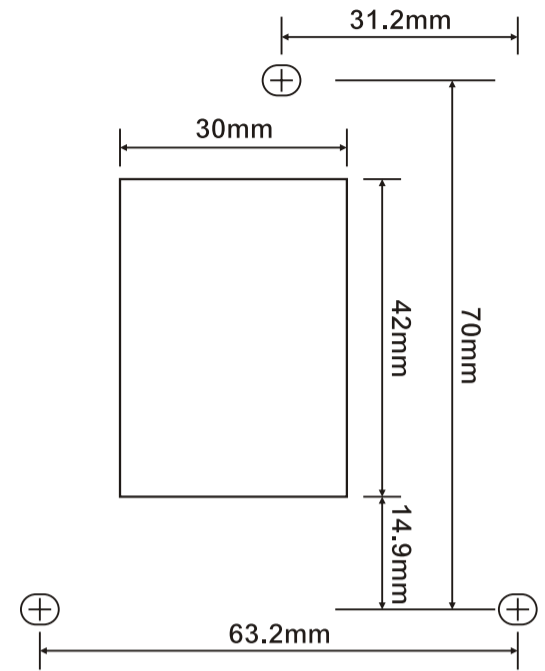
- Voltage range: 9 ~ 24 VDC
- Current max. Average: 800 mA
- Max distance for wiegand: 80M
- Max distance for RS-485: 1000M

■ Notice

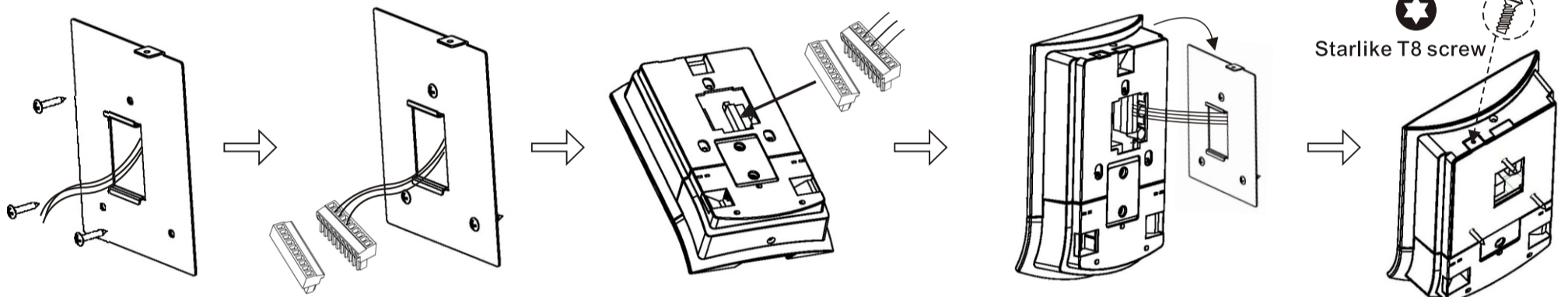
- Do not connect other contacts to the power unit except power contacts.
- Do not apply any unverified power supply to the unit or the hardware system may be damaged or may cause system an unstable condition.



1:1 Installation



C. Installation



Connecting wire and using screw to fix the hanger on the wall

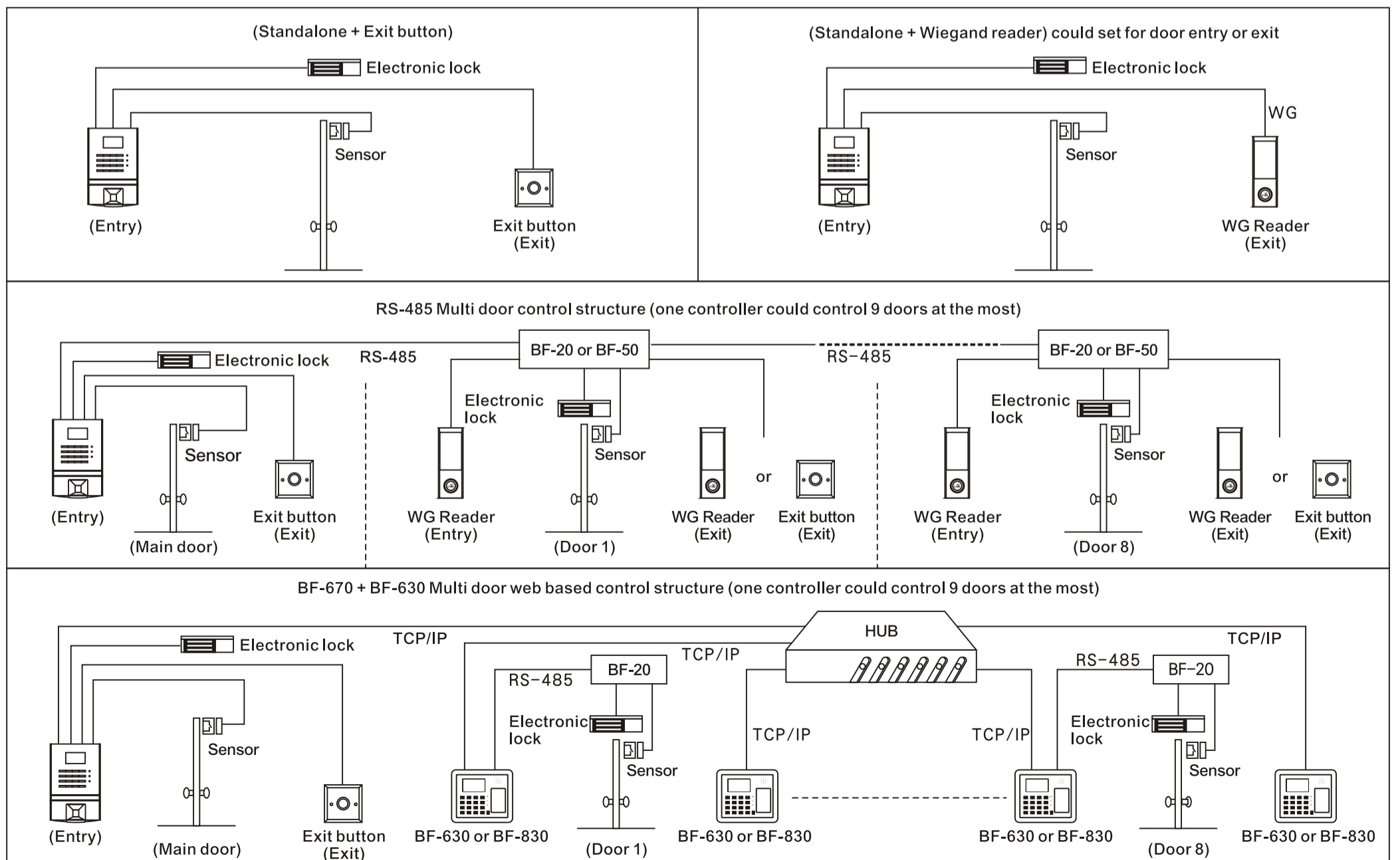
Remove the two terminals from BF-670 and connect them with wire

After finish wire connection, please attach terminal back to BF-670

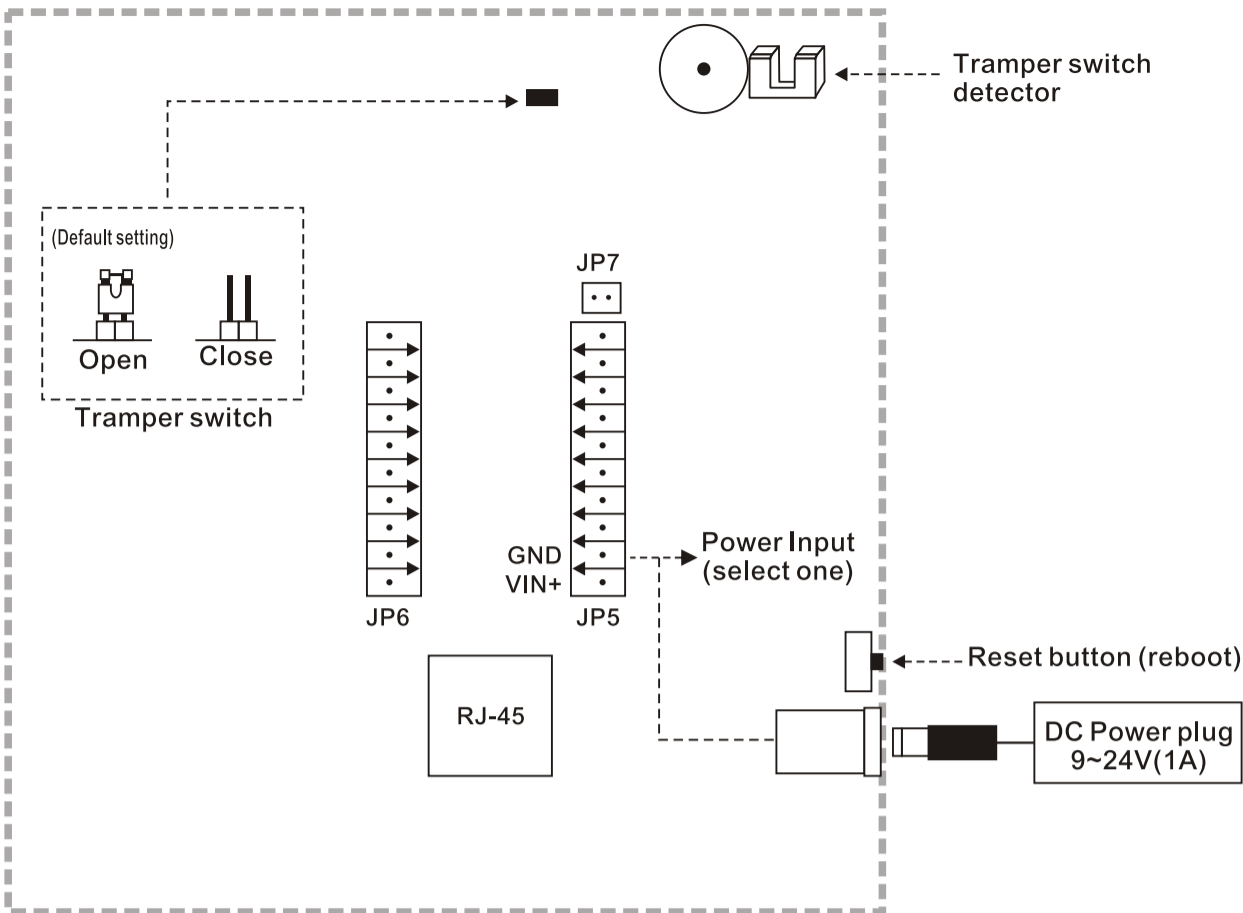
Install BF-670 to the hanger

Fix the screw

D. Structure



E. Controller backside introduction



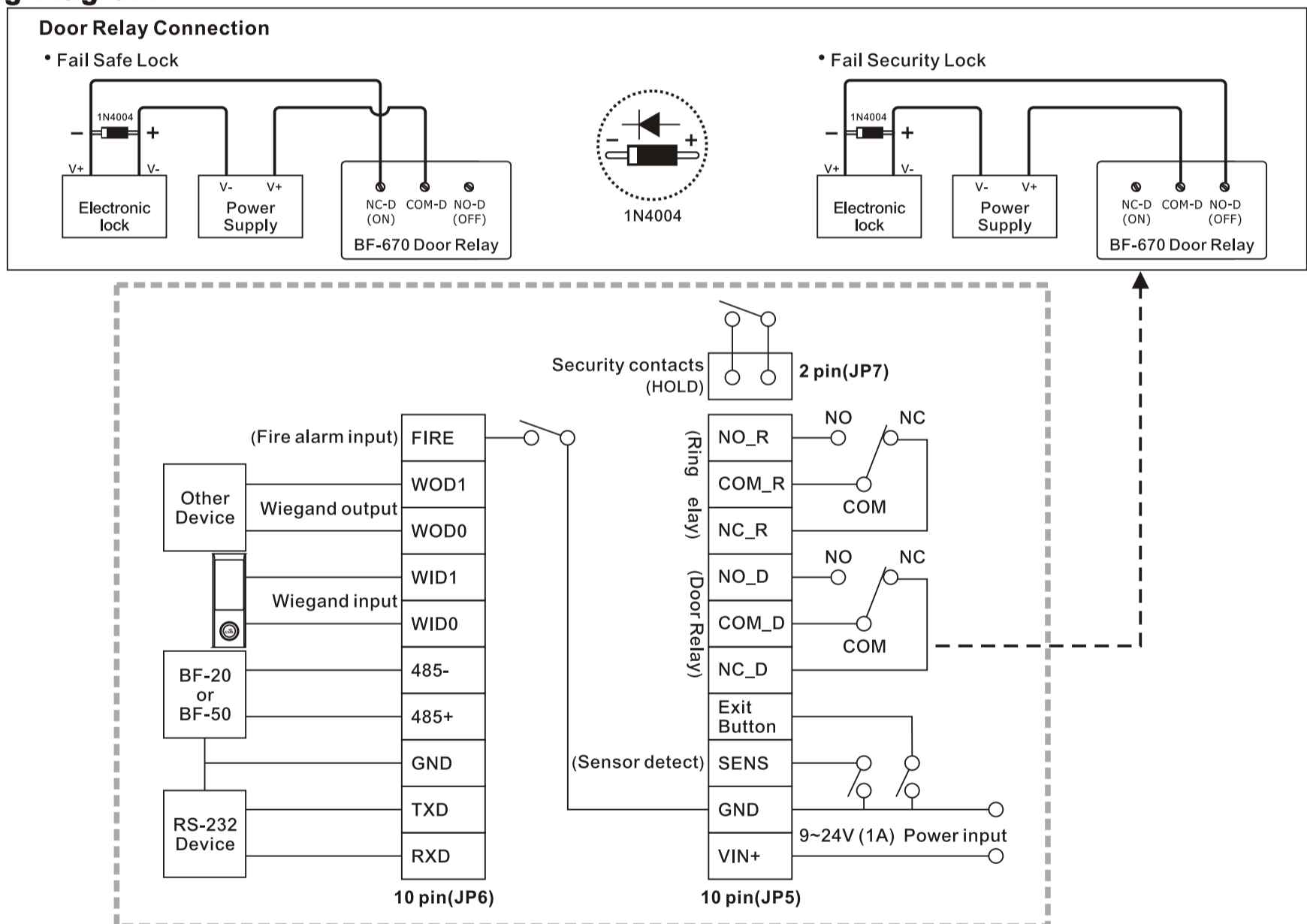
F. Terminal connection guide

2 pin(JP7)	
IN3	Security contacts (HOLD)
GND	

10 pin(JP6)	
FIRE	Fire alarm input (When it triggers, all of doors will be opened)
WOD1	Wiegand output
WOD0	
WID1	Wiegand input (Option: WR Wiegand reader)
WID0	
485-	Option: BF-20 & BF-50 (Remote control relay)
485+	
GND	External equipment needs to share GND
TXD	External connect RS-232 equipment (Option: SH-24 mini printer)
RXD	

10 pin(JP5)	
NO_R	Ring control Relay (Max. 2A 30V)
COM_R	
NC_R	
NO_D	Door control Relay (Max. 2A 30V)
COM_D	
NC_D	
Exit Button	Exit button
SENS	Sensor detect
GND	DC 9~24V (1A) Power input
VIN+	

G. Wiring Diagram



Notice

1. you need to use web to open or close door sensor function
(Enter web page, the default IP address is 192.168.0.66, user id & password: admin→door setup→main door setup→main door→Door sensor detect→Normal mode)
2. Using Wiegand equipment, please note GND needs to be connected together

H. Hardware login setting:

Steps for enter administrator mode:

1. Please press "F1" twice to enter the administrator mode. Please enter the password. (Default password is 111111.) Then press "# " as sure
2. For Sure, please click #. To cancel, please click *
3. Add a new user: Press 1 (User) → Press 1 Add User → Single or Continuous → Verify proximity cards or enter ID. Card should be 10 numbers. If you do not use card, please enter user ID or employee number. Press # for sure → Press # for register fingerprint and put your finger on the sensor → The same step to register another finger → Register Password (if no need for password, please press *) → If you only want to register a user, please press #. Once the register step is finished, you will move back the setting page.
4. Delete user: Enter administrator mode → Press 1 (User) → Press 2 (Delete User) → Enter card number → Press # for sure to delete.
5. Change IP: Enter administrator mode → Press 2 (Setting) → Press 4 to IP config → Enter IP and press # for sure → enter Subnet mask and press # → enter Gateway and press # → System will reboot. (EX: 192.168.0.66, please enter 192168000066)
6. Set time: Enter administrator mode → Press 2 (Setting) → Press 1 to enter time and press # for sure → enter year/month/ date (EX: 2010/6/30 is 20100630) → enter week and press #.